

# LOVE NEVER DIES

## FACTS & FIGURES

January 2018

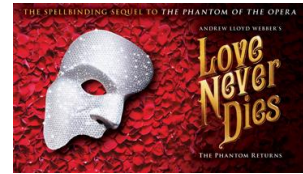
### About LOVE NEVER DIES

- *Love Never Dies* is the spellbinding sequel to *The Phantom of the Opera*.
- *Love Never Dies* picks up 10 years after *The Phantom of the Opera* and follows the characters you know and love, including The Phantom, Christine Daaé, Madame Girya, Meg Girya and Raoul, Vicomte de Chagny.
- The year is 1907. It is 10 years after his disappearance from the Paris Opera House and The Phantom has escaped to a new life in New York where he lives amongst the screaming joy rides and freak shows of Coney Island. In this new, electrically charged world, he has finally found a place for his music to soar, but he has never stopped yearning for his one true love and musical protégée, Christine Daaé.
- *Love Never Dies* featuring a soaring score by Tony, Olivier, Oscar and Golden Globe award winner Andrew Lloyd Webber.
- *Love Never Dies* features a book by Andrew Lloyd Webber, Ben Elton, Glenn Slater and Frederick Forsyth. Lyrics were written by Glenn Slater.
- The new touring production reflects an extensive re-working of the material by an Australian creative team for the original Australian premiere in 2011.
- The new tour was described by Chris Boyd in *The Australian* as "The best thing Lloyd Webber has written in the quarter century since *The Phantom of the Opera*".
- Directed by Simon Phillips ([Priscilla Queen of the Desert The Musical](#)) with new set and costume designs by Gabriela Tylesova, choreography by 2011 Astaire Awards winner Graeme Murphy, lighting design by Nick Schlieper and sound design by Mick Potter, the show is one of the few instances of a major West End musical being given a complete makeover for subsequent productions.



BBO NYC

BROADWAY BOOKING OFFICE NYC



- Since its premiere in 2010, *Love Never Dies* has enjoyed productions worldwide in London, Australia, Denmark, Japan and Germany, as well as multiple recordings including a concept album and a London cast recording.
- A DVD release of the Australian production has delighted fans globally, and now the North American tour brings the musical to the US for the first time.

## About LOVE NEVER DIES

### Load-in

- 71 local stagehands are hired in every market to load the production into the theatre
- 33 local stagehands are used for each performance
- 11 trucks are used to move the production from city to city

### Lights

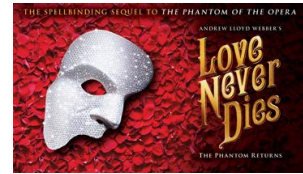
- There are 354 lighting cues used throughout the show
- There are 304 conventional lighting units (including 69 moving lights)
- Over 4,000 lightbulbs are used each performance
  - It takes the power of 20 car batteries to control the lights on/in the moving scenic units
- Over 15,000 feet of cable is needed for all the lights

### Costumes

- Over 250 costume pieces used during the show.
- Peacock Dress
  - It took an estimated 250 hours to create the Peacock dress
  - There are no real peacock feathers on the dress. The “feathers” on Christine’s dress are made from fabric; four layers of crystal sheer pleating that are cut to shape and stitched together
  - There are over 85 fabric feathers with five layers each in train, and about 150 blue feathers on the dress itself
  - The dress weighs over 17 pounds, with the train weighing an additional six pounds. There are handles in the skirt made from plastic to help the character of Christine pick it up when she runs
- Quick Changes
  - The character of Christine has the fastest quick change, changing out of the maroon arrival dress to the cream nightgown used in the hotel scene. She has only 18 seconds, and it happens on stage behind the carriage
  - The character of Meg Giry also has a very quick change during “Dear Old Friend,” which is about 25 seconds
- The women’s ensemble each change 9 to 11 times during the performance
- There are 11 local dressers and a full-time local seamstress employed in each city
- There are over 25 kinds of feathers used in the production
- 60 loads of laundry are done each week

### Wigs

- 53 wigs and 12 hair pieces travel with the show



- 30 wigs, six hair pieces and a bald cap are used in the show every night
- The Phantom's bald cap takes 10 hours per week to prep and paint with make-up. A new bald cap must be used for each performance

### Sound

- *Love Never Dies* uses over 150 speakers
  - 119 speakers in the house
  - 44 on-stage / pit speakers / monitors
  - 38 channels of wireless microphones
  - 11 channels of communication backstage for the crew
- 15 orchestra members (including the conductor) are involved with *Love Never Dies*